

PUMP SET TRAILER FEATURES

- EC type approval no – e11*2007/46*0755*00
- Diesel engine powered with emissions to (EU Stage 3A)
- Purpose-designed to cope with arduous working conditions
- 1500 kg heavy duty axle
- 910 kg GVW
- Positive Displacement Progressive Cavity Pump
- Designed for easy operation
- Galvanised trailer assembly for longer life
- Built-in clutch unit with manual facility
- Spare wheel
- Throttle allowing variable speed for process control
- Minimal maintenance required

The Molex Pump Set

*Progressive
Cavity Pump Set
Capable of
Pumping Heavily
Laden or Viscous
Liquids and
Sludges*



Reliability, Service, Value... for Life

Distributed by: Whale Tankers Ltd.

Ravenshaw, Solihull, West Midlands, B91 2SU United Kingdom. Telephone +44(0)121 704 5700
whalemail@whale.co.uk www.whale.co.uk

Trailer Units – Sewerage and Water Based Sludges

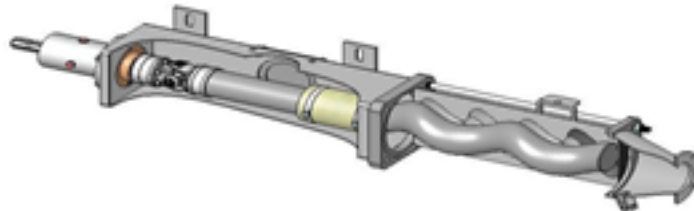
- Ideal for emergency flood water pumping
- Can be used on sewage and pumping through agricultural slurries
- Effective even with barely viscous liquid
- High delivery pressure up to 6 bar (90psi)
- High flow up to 1350 litres per minute (18,000 gallons per hour)
- Good suction lift capability of over 8 metres
- Capable of lifting liquids containing 20 per cent or more solids
- No Foaming

Optional Trailer Units - Oil Based Sludge's (Non ATEX Zone)

- Draining of oil lagoons and heavy industrial sludges
- Unit fitted with Engine Shutdown Valve Spark Arrestor and GF42 Nitrile Stator
- Complete with 10m Earthing Reel and earthing points
- Operators to note these units are not suitable for use in ATEX Classed Zones

Optional Units - Electrically driven, Skid Mount or Trailer Version

- Electric Motor 22Kw plus Gearbox with Online Starter
- Mk3A Molex Pump with GF42 stator suitable for oil



The Molex Pump itself can also be supplied freestanding or mounted as follows:

- Bare shaft with keyed or splined driveshafts
- Tanker mounted for loading, transfer or spreading
- Single axle trailer mounted with its own power source
- Mounted on a Tractor Link Frame



Please... recycle this Brochure when you have finished with it.

Reliability, Service, Value... for Life



Scan for further detail

Distributed by: Whale Tankers Ltd.

Ravenshaw, Solihull, West Midlands, B91 2SU United Kingdom. Telephone +44(0)121 704 5700
whalemail@whale.co.uk www.whale.co.uk

