

WHALE TANKERS SPECIFICATION**MOLEX PUMP SET TRAILER - MK5 Pump - For Water & Sewerage****Date:** 24/02/2015**Quote Number:****Production Number:****Customer:****Contact:****Tel:****Email:****Manuals and Certificates:** Sent to addressee above unless otherwise specified**Address:****Whale Contact:** Main Switchboard 0121 704 5700**Orders Email:** commercial@whale.co.uk**Whale Service:** 0121 704 5710**Whale Spares:** 0121 704 5720**PROGRESSIVE CAVITY PUMP SET TRAILER****Molex pump size:** Molex HD 130/100 c/w drain valve. **MK5 Pump** (Whale Part No 119058)**Type of Stator:** Universal, suitable for use with sewage/sludge/ water**Molex Pump Finish:** Galvanised Finish**Max flow:** 1,350 litres per minute - 18,000 gallons per hour .**Max: Pressure:** Up to 90 psi.**Inlet connection:** 4" Galvanised Bauer female - c/w blank cap and priming port.**Discharge connection:** 4" Galvanised Bauer female - c/w blank cap.**ENGINE - Power unit:** Suitable Diesel Engine **37.0 kW/49.6 bhp**. 45 litre fuel tank. (7.5 Hours Running Time)**Clutch:** Heavy-duty Industrial over-centre type.**Drive:** V belts with bolted access guards.**TRAILER - Running gear:** Axle 1500 kg with auto reverse brakes.**Drawbar:** 50mm ball towing hitch, c/w jockey wheel as standard.**Prop stands:** 2 off at rear. Jockey wheel on front A-frame.**Tow hitch height:** Standard 430mm + or - 35mm**Pump set frame/trailer:** Single axle trailer galvanised, with rubber suspension, spare wheel mounted on A frame
EU standard 13 pin plug electric's.**General finish:** Galvanised and brushed stainless steel.**Wheels/ tyres:** Wheel and tyre assemblies 175R 13**Mudwings:** Plastic mudwings**Lights:** 12 volt Rear lamp assemblies and number plate lamp .**Controls:** Ignition switch. Charge warning light, Low oil pressure warning lamp. Glow plug. Hours meter. Hand operated throttle. Connectors for external battery start.**GENERAL****Regulations:** Statutory instrument 2000 No.128 regulation 4

: The supply of machinery (safety) regulations 2008: SI 2008 No.1597

: Noise emission in the environment directive 2000/14/EC

Quality Assurance: Certified Quality System ISO 9001: 2008, Accredited by VCA (UKAS 0028)**Whole Vehicle Type Approval:** Type Approved in Accordance with Regulations identified in 2007/46/EC –
Frame Work Directive. ANNEX IV, Part 1, O2 (incorporating all UNECE
regulations & EEC Directives)**Certificates supplied:** Declaration of conformity for fitness and quality

: Declaration of conformity to UK machinery (safety) regulations 98/37/EC

: Certificate of noise emission measured / guaranteed power level

Insurance: £15 million products liability cover

WHALE TANKERS SPECIFICATION

MOLEX PUMP SET TRAILER - MK5 Pump - For Water & Sewerage

Labels/ Handbook: Safety labels fitted to vehicle as required and Operator handbook supplied

Commissioning: One day vehicle commissioning instruction

Delivery: Ex Works

Approx. Dimensions: Width 1600mm.
: Height 1400mm.
: Length 3500mm.
: Approx. weight 910 kgs.



For Water & Sewerage



SPECIFICATION ENDS

PUMP SET TRAILER FEATURES

- EC type approval no – e11*2007/46*0755*00
- Diesel engine powered with emissions to (EU Stage 3A)
- Purpose-designed to cope with arduous working conditions
- 1500 kg heavy duty axle
- 910 kg GVW
- Positive Displacement Progressive Cavity Pump
- Designed for easy operation
- Galvanised trailer assembly for longer life
- Built-in clutch unit with manual facility
- Spare wheel
- Throttle allowing variable speed for process control
- Minimal maintenance required

The Molex Pump Set

*Progressive
Cavity Pump Set
Capable of
Pumping Heavily
Laden or Viscous
Liquids and
Sludges*



Reliability, Service, Value... for Life

Distributed by: Whale Tankers Ltd.

Ravenshaw, Solihull, West Midlands, B91 2SU United Kingdom. Telephone +44(0)121 704 5700
whalemail@whale.co.uk www.whale.co.uk

Trailer Units – Sewerage and Water Based Sludges

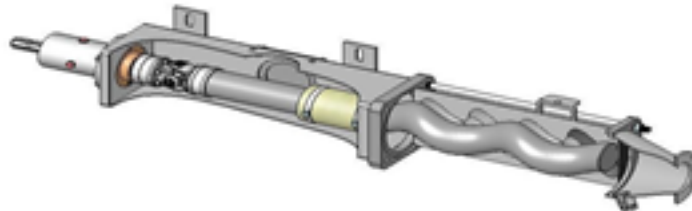
- Ideal for emergency flood water pumping
- Can be used on sewage and pumping through agricultural slurries
- Effective even with barely viscous liquid
- High delivery pressure up to 6 bar (90psi)
- High flow up to 1350 litres per minute (18,000 gallons per hour)
- Good suction lift capability of over 8 metres
- Capable of lifting liquids containing 20 per cent or more solids
- No Foaming

Optional Trailer Units - Oil Based Sludge's (Non ATEX Zone)

- Draining of oil lagoons and heavy industrial sludges
- Unit fitted with Engine Shutdown Valve Spark Arrestor and GF42 Nitrile Stator
- Complete with 10m Earthing Reel and earthing points
- Operators to note these units are not suitable for use in ATEX Classed Zones

Optional Units - Electrically driven, Skid Mount or Trailer Version

- Electric Motor 22Kw plus Gearbox with Online Starter
- Mk3A Molex Pump with GF42 stator suitable for oil



The Molex Pump itself can also be supplied freestanding or mounted as follows:

- Bare shaft with keyed or splined driveshafts
- Tanker mounted for loading, transfer or spreading
- Single axle trailer mounted with its own power source
- Mounted on a Tractor Link Frame



Please... recycle this Brochure when you have finished with it.

Reliability, Service, Value... for Life



Scan for further detail

Distributed by: Whale Tankers Ltd.

Ravenshaw, Solihull, West Midlands, B91 2SU United Kingdom. Telephone +44(0)121 704 5700
whalemail@whale.co.uk www.whale.co.uk

